



[www.monoequip.com](http://www.monoequip.com)



# MXn

## RACK OVEN

### — **SPARES MANUAL** —

MACHINE NO.FG164

When ordering spares please quote the **machine serial number** which can be found on the silver information plate of the machine and on the front cover of your manual.

**MONO EQUIPMENT**  
Queensway  
Swansea West Industrial Estate  
Swansea. SA5 4EB UK

Tel. +44(0)1792 561234  
email: [spares@monoequip.com](mailto:spares@monoequip.com)  
Spares Tel. +44(0)1792 564039  
Fax. 01792 561016

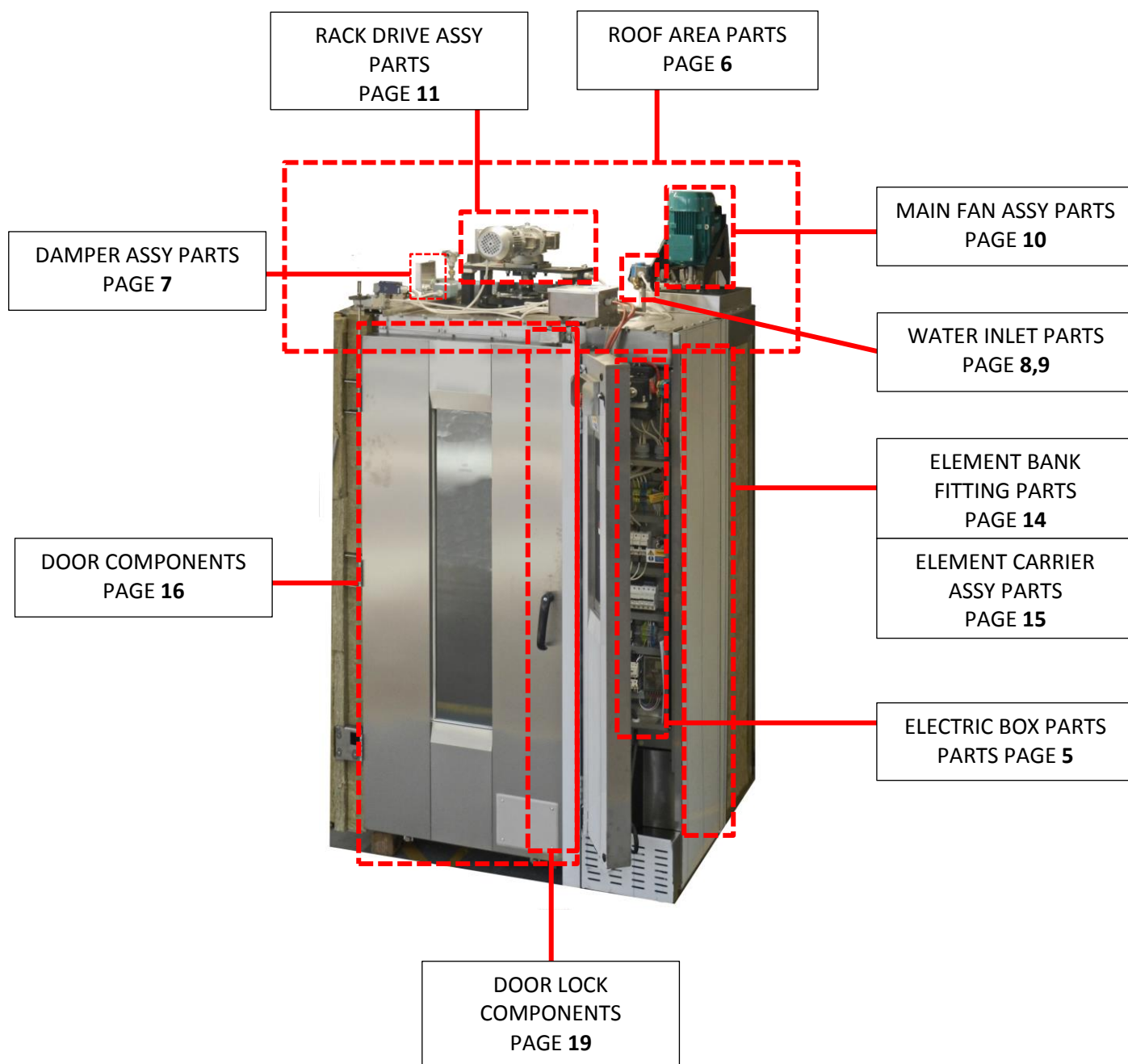
# **MXn RACK OVEN**

---

	PAGE
<b>MAIN COMPONENT PARTS</b>	<b>- 3</b>
<b>MAIN ELECTRICAL PARTS LIST</b>	<b>- 4</b>
<b>ELECTRICAL BOX LAYOUT</b>	<b>- 5</b>
<b>ROOF AREA PARTS LAYOUT</b>	<b>- 6</b>
<b>REPLACEMENT DAMPER ASSEMBLY</b>	<b>- 7</b>
<b>WATER INLET COMPONENTS – STANDARD TYPE</b>	<b>- 8</b>
<b>WATER INLET COMPONENTS – TESCO TYPE</b>	<b>- 9</b>
<b>MAIN FAN ASSEMBLY PARTS</b>	<b>- 10</b>
<b>RACK DRIVE ASSEMBLY PARTS</b>	<b>-11</b>
<b>RACK DRIVE SEAL REPLACEMENT</b>	<b>-13</b>
<b>ELEMENT BANK FITTING – MAIN COMPONENTS</b>	<b>-14</b>
<b>ELEMENT CARRIER ASSEMBLY PARTS</b>	<b>-15</b>
<b>DOOR – MAIN COMPONENTS</b>	<b>-16</b>
<b>DOOR LOCK COMPONENTS</b>	<b>-19</b>
<b>REPLACEMENT DOOR LOCK KIT</b>	<b>-21</b>

# MAIN COMPONENTS PARTS

---

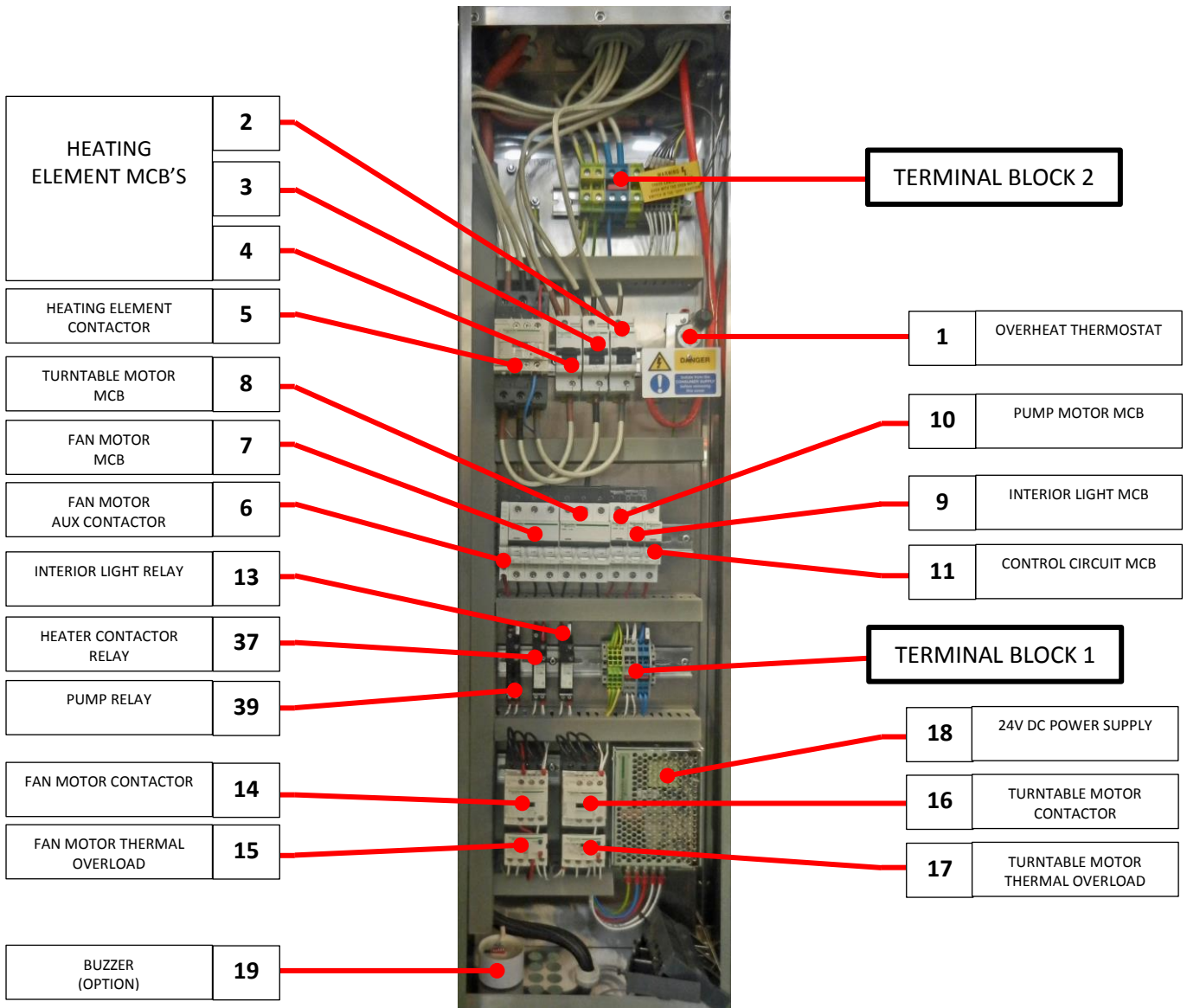


## MAIN ELECTRICAL – PARTS LIST

---

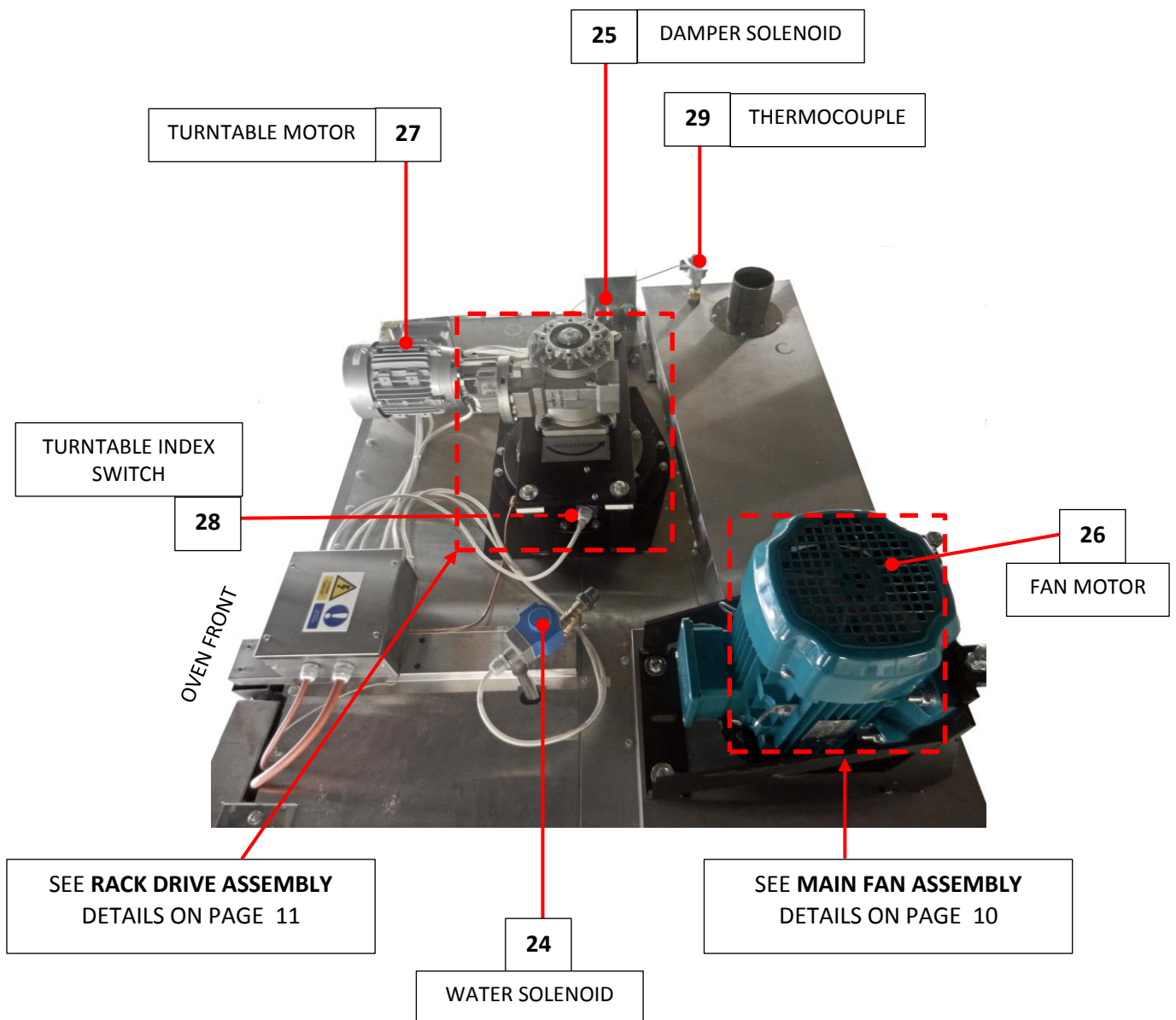
ITEM	PART NUMBER	DESCRIPTION
1	B873-30-015	<b>OVERHEAT THERMOSTAT</b>
2	B872-22-074	HEATING ELEMENT MCB
3	B872-22-074	HEATING ELEMENT MCB
4	B872-22-074	HEATING ELEMENT MCB
5	B801-08-032	HEATING ELEMENT CONTACTOR
6	B872-07-004	MAIN FAN MOTOR MCB AUXILLARY CONTACTOR
7	B872-22-054	MAIN FAN MOTOR MCB
8	B872-22-052	TURNTABLE MOTOR MCB
9	B872-22-003	INTERIOR LIGHT MCB
10	B872-22-062	PUMP MOTOR MCB
11	B872-22-061	CONTROL CIRCUIT MCB
13A	B801-37-001	INTERIOR LIGHT RELAY
13B	B801-36-001	INTERIOR LIGHT RELAY BASE
14	B801-08-031	MAIN FAN MOTOR CONTACTOR
15	B801-01-042	MAIN FAN MOTOR THERMAL OVERLOAD
16	B801-08-031	TURNTABLE MOTOR CONTACTOR
17	B801-01-041	TURNTABLE MOTOR THERMAL OVERLOAD
18	B801-93-005	24V DC <b>POWER SUPPLY</b>
19	B723-92-002	BUZZER OPTION
24	B965-83-004	<b>STEAM SOLENOID</b>
25	B998-83-005	<b>DAMPER SOLENOID</b>
26	B859-74-024	<b>MAIN FAN MOTOR</b>
27	B912-74-009	<b>TURNTABLE MOTOR UNIT</b>
28A	B801-11-013	TURNTABLE INDEX SWITCH BODY
28B	B801-45-003	TURNTABLE INDEX SWITCH HEAD
28C	B801-45-004	TURNTABLE INDEX SWITCH ACTUATOR
29	B709-95-001	<b>THERMOCOUPLE</b>
30A	B801-11-013	DOOR SWITCH BODY
30B	B801-45-003	DOOR SWITCH HEAD
30C	B801-45-004	DOOR SWITCH ACTUATOR
31A	B721-67-011	INTERIOR LIGHT HOLDER
31B	B857-94-007	INTERIOR LIGHT BULB
32A	B801-12-022	INTERIOR LIGHT PUSH BUTTON
32B	B801-14-005	INTERIOR LIGHT PUSHBUTTON CONTACT BLOCK
32C	B801-09-011	INTERIOR LIGHT PUSHBUTTON ENCLOSURE
32D	B801-15-024	INTERIOR LIGHT PUSHBUTTON LEGEND
34	158-25-80000	<b>PCB ASSEMBLY</b>
35	B979-04-001	HEATING <b>ELEMENT</b>
36A	B872-22-121	MOULDED CASE CIRCUIT BREAKER
36B	B872-02-004	UNDERVOLTAGE RELEASE COIL
36C	B872-19-001	EXTENSION SHAFT AND HANDLE
37A	B801-37-001	HEATER CONTACTOR RELAY
37B	B801-36-001	HEATER CONTACTOR RELAY BASE
38	B705-25-009	USB CABLE
39A	B801-37-001	PUMP RELAY (IF PUMP FITTED)
39B	B801-36-001	PUMP RELAY BASE (IF PUMP FITTED)
40	B842-48-010	SUPPRESSOR UNIT (IF PUMP FITTED)
41	A900-28-005	<b>WATER PUMP</b> (IF FITTED)
42	B842-92-005	SPEAKER

# ELECTRICAL BOX PARTS LAYOUT



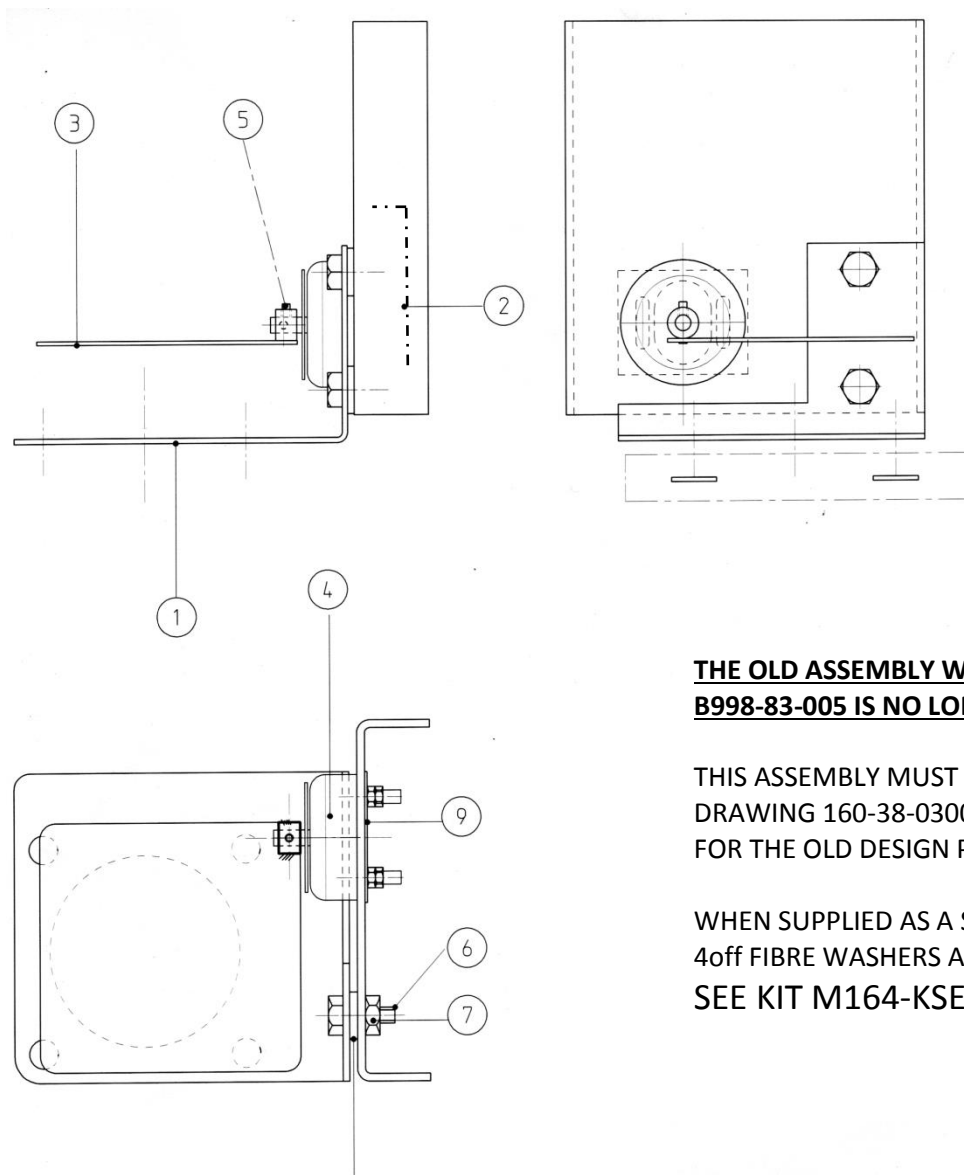
For part numbers see page - 4

# ROOF AREA PARTS LAYOUT



For part numbers see page - 4

# REPLACEMENT DAMPER ASSEMBLY



**THE OLD ASSEMBLY WITH SOLENOID B998-83-005 IS NO LONGER AVAILABLE.**

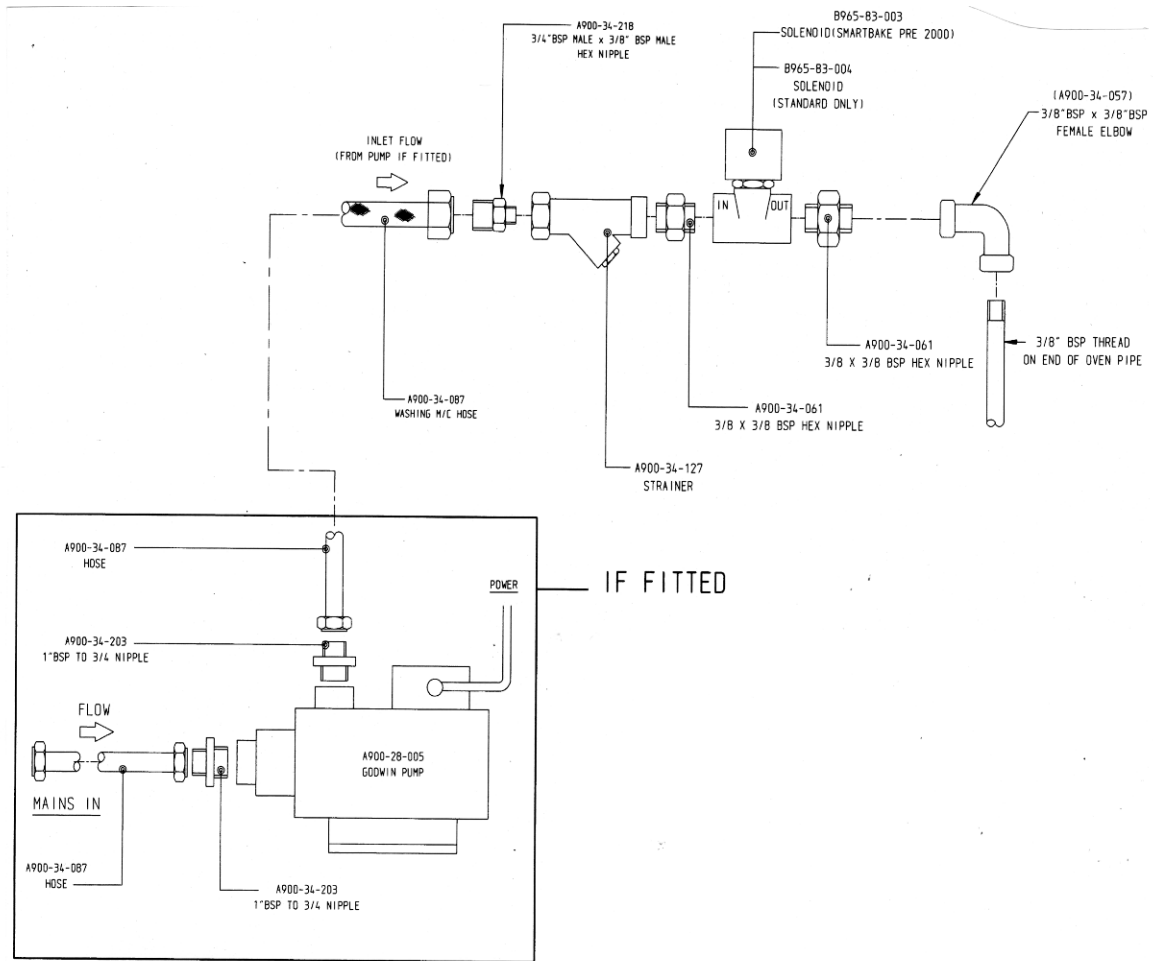
THIS ASSEMBLY MUST BE SUPPLIED WITH DRAWING 160-38-03000 AS A REPLACEMENT FOR THE OLD DESIGN PARTS.

WHEN SUPPLIED AS A SPARE PART, INCLUDE 4off FIBRE WASHERS A900-05-190  
SEE KIT M164-KSE006

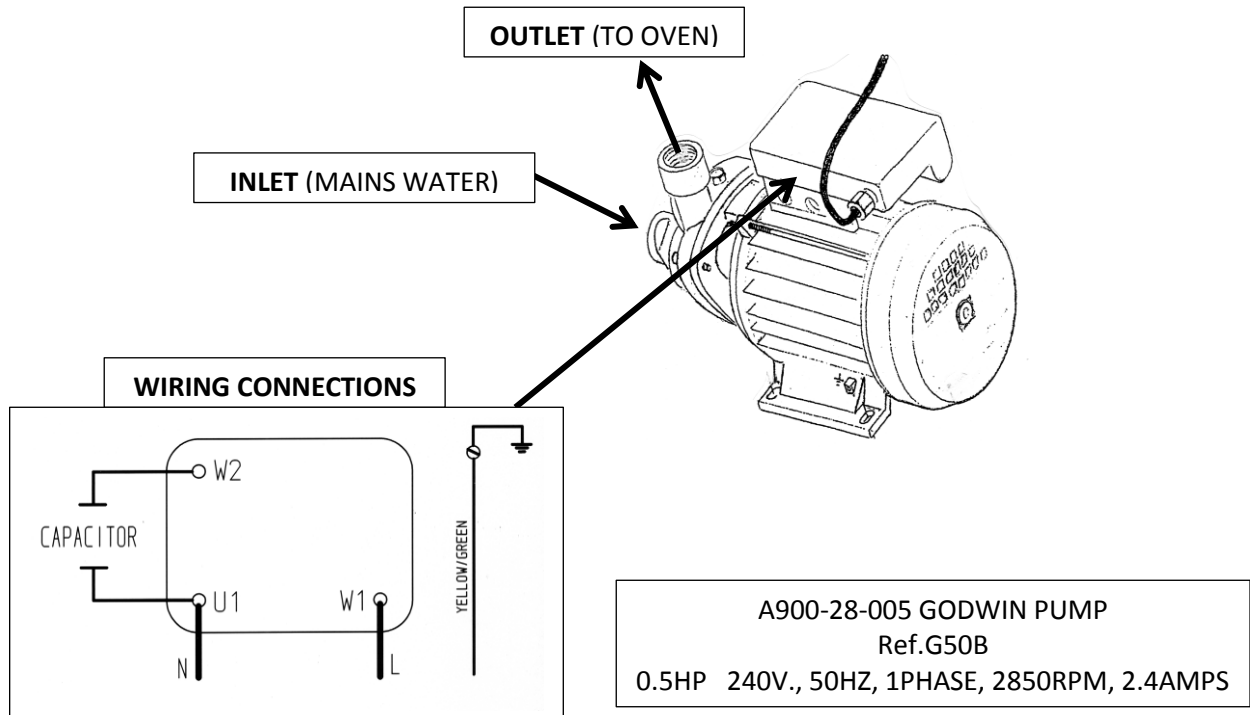
ITEM	PART NUMBER	DESCRIPTION	QTY
1	160-38-03100	BASE BRACKET	1
2	160-38-03200	SOLENOID BRACKET	1
3	160-38-03300	DAMPER FLAP	1
4	B749-83-004	SOLENOID	1
5	A900-01-197	PIN	1
6	A900-03-532	M8 X 20LG HEX HEAD	2
7	A900-04-143	M8 BINX NUT	2
8	145-03-11300	FIBRE WASHER	2
9	164-38-03400	WASHER PLATE	1

PIN USED UP TO SEPT 2013.  
AFTER THIS A COLLAR WITH M4 GRUB SCREW WAS FITTED.

# WATER INLET COMPONENTS - STANDARD

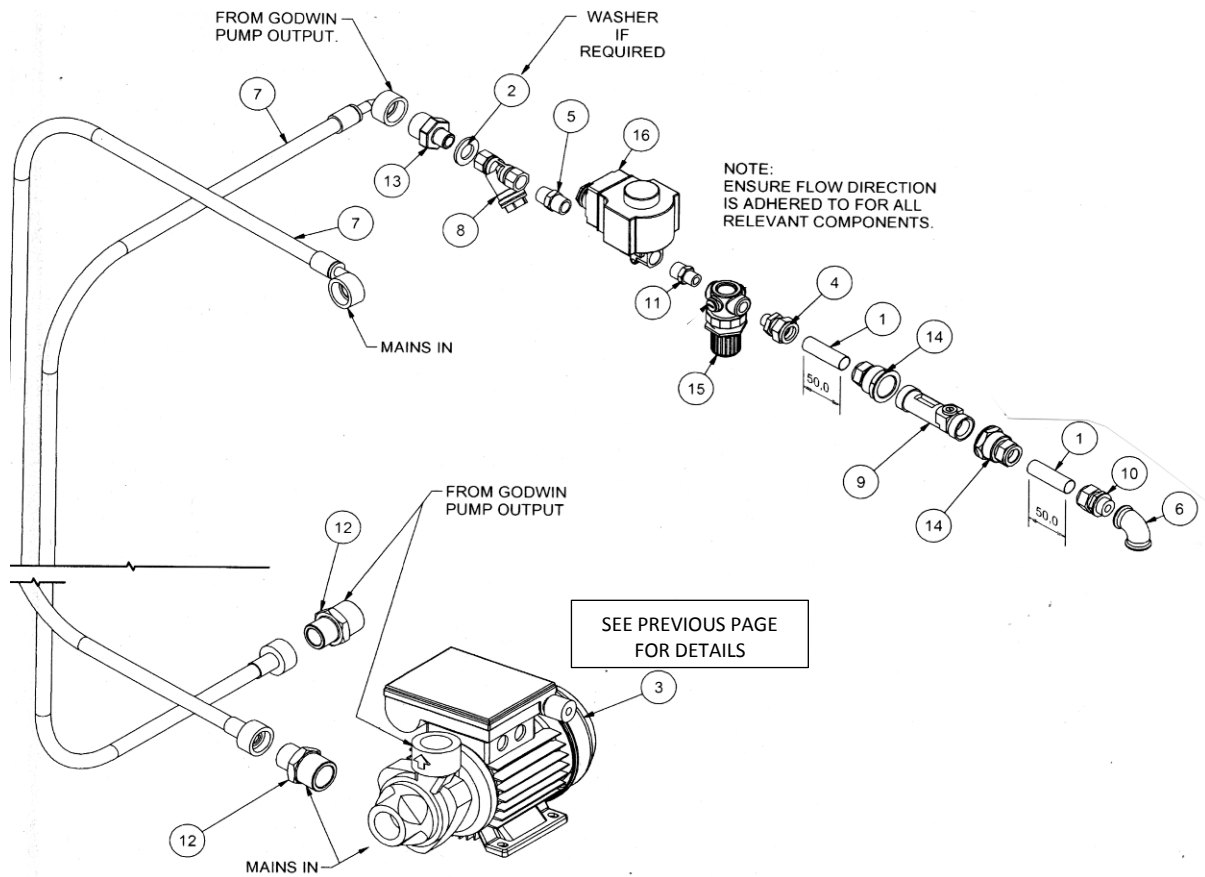


**GODWIN WATER PUMP (IF FITTED) PART NUMBER A900-28-005**  
 THIS CAN BE FITTED TO OVENS THAT ARE IN A LOCATION WITH LOW WATER PRESSURE.



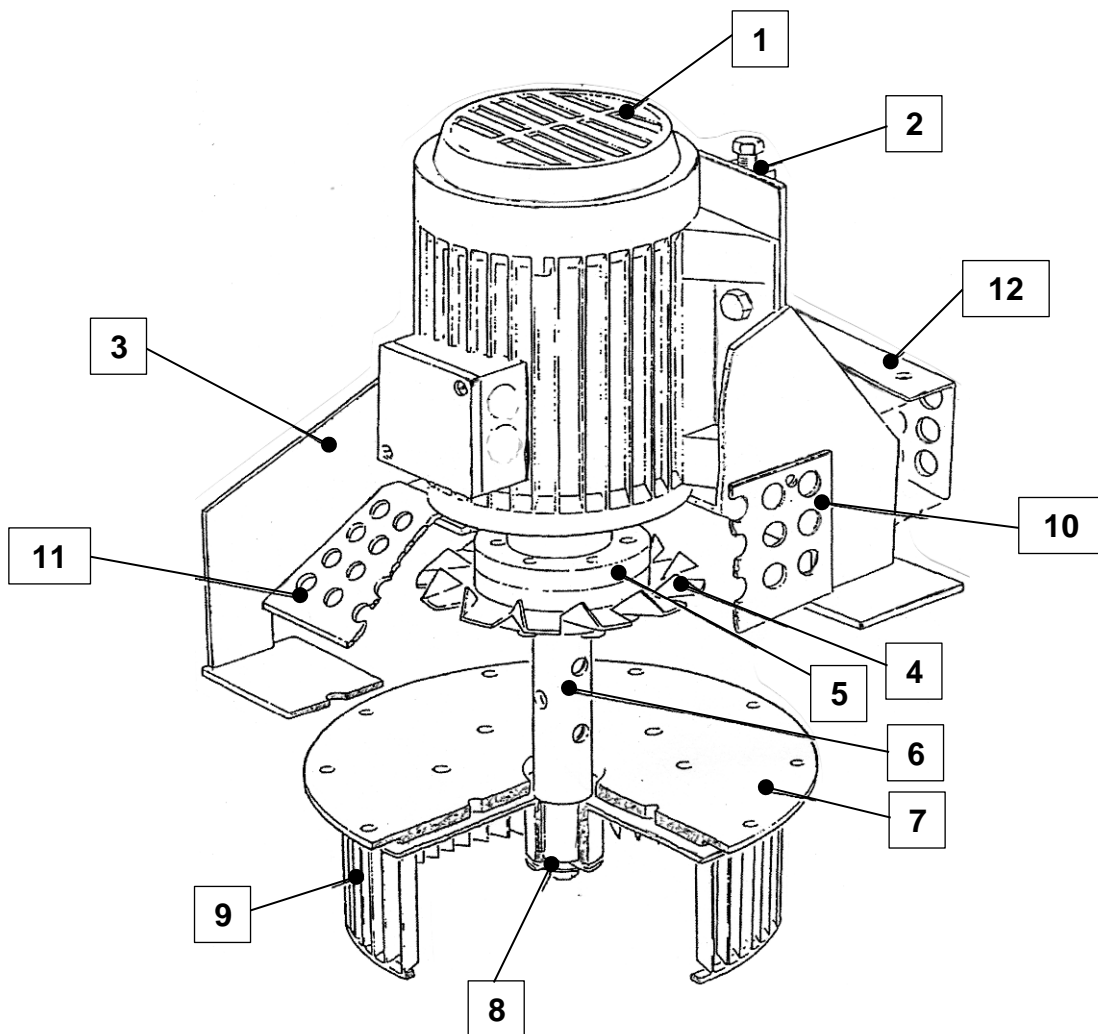


# WATER INLET COMPONENTS –TESCO (WITH PUMP)



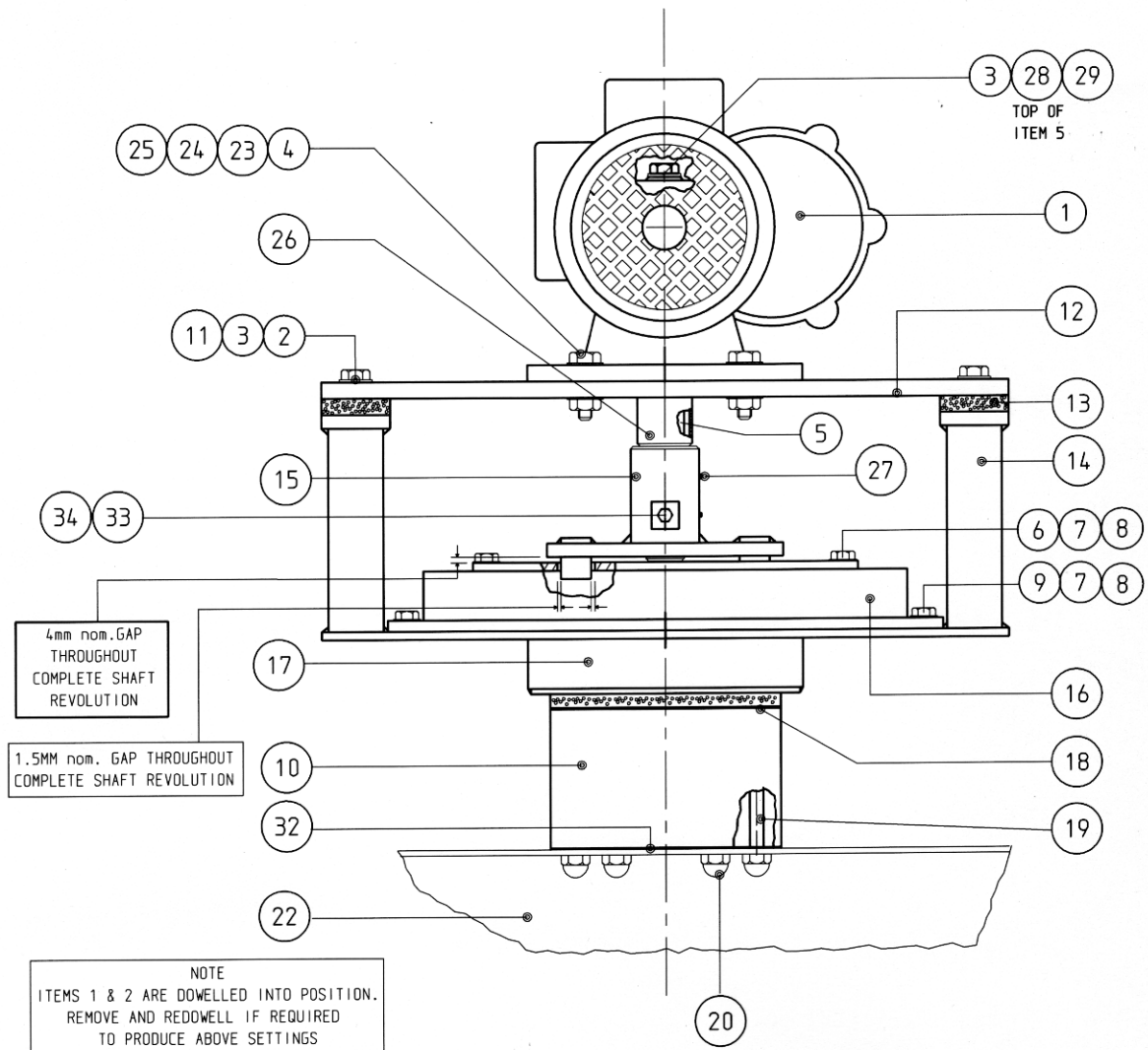
ITEM	PART NUMBER	DESCRIPTION	QTY
1	164-01-02400	TUBE	2
2	A900-05-254	M16 PLAIN WASHER	1
3	A900-28-005	<b>GODWIN G50B WATER PUMP</b>	1
4	A900-34-021	15MM COMP. X 1/4" BSP MALE COUPLING	1
5	A900-34-056	3/8" X 3/8" BSPT ST/STEEL NIPPLE	1
6	A900-34-057	3/8" BSP FEMALE ELBOW	1
7	A900-34-087	CONNECTING HOSE (1.5Mtr LONG)	1
8	A900-34-127	Y STRAINER 3/8" BSP	1
9	A900-34-165	FLOW VALVE	1
10	A900-34-177	15MM COMP. TO 3/8" MALE	1
11	A900-34-191	1/4" BSPT MALE TO 3/8" BSPT MALE REDUCER	1
12	A900-34-203	REDUCING NIPPLE BSPT 1" X 3/4"	2
13	A900-34-218	3/4" X 3/8" REDUCER	1
14	A900-34-325	CENTRE STRAIGHT COMP. FEMALE IRON SOCKET CONNECTOR. 15MM COMP X 3/4" FEMALE BRASS	2
15	A900-34-392	WATER PRESSURE REGULATOR	1
16	B965-83-004	SOLENOID VALVE	1

# MAIN FAN ASSEMBLY PARTS



ITEM	PART NUMBER	DESCRIPTION	QTY
1	B859-74-024	<b>MOTOR</b>	1
2	160-35-00100	MOTOR SLIP PLATE ASSEMBLY	1
3	160-35-00500	FAN SUPPORT BRAKET	1
4	160-14-02400	COOLING FAN	1
5	160-14-10000	DRIVING FLANGE	1
6	160-14-01700	FAN SHAFT LOWER	1
7	160-35-01000	LOWER FAN ACCESS COVER	1
8	160-14-10100	RETAINING WASHER	1
9	A900-27-049	<b>MAIN FAN</b>	1
10	160-35-01500	FAN GUARD – SIDE	2
11	160-35-01600	FAN GUARD – FRONT	1
12	160-35-01700	FAN GUARD – REAR	1

# RACK DRIVE ASSEMBLY PARTS



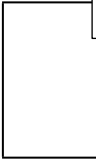
ITEM	PART NUMBER	DESCRIPTION	QTY
1	B912-74-009	<b>GEARMOTOR UNIT (VARVEL MRA70)</b>	2
2	A900-05-143	M10 PLAIN WASHER	4
3	A900-05-142	M10 SPRING WASHER	5
4	A900-03-387	M12 X 45LG HEX HD SETSCREW	4
5	162-02-04100	DRIVE SHAFT ASSY	1
6	A900-03-383	M8 X 25LG HEX. HD. SETSCREW	8
7	A900-05-144	M8 PLAIN WASHER	16
8	A900-05-141	M8 SPRING WASHER	16
9	A900-03-439	M8 X 50LG HEX. HD. SETSCREW	8
10	160-36-01000	TURNTABLE DRIVE (LOWER)	1
11	A900-03-438	M10 X 45LG HEX. HD. SETSCREW	4
12	160-15-00600	TOP PLATE	1
13	160-15-00700	INSULATION PACKING PIECE	4
14	160-36-00100	BEARING SUPPORT PLATE ASSY	1
15	162-02-04400	DRIVE SPIDER	1
16	160-36-00300	TURNTABLE BEARING	1
17	160-15-00800	TURNTABLE DRIVE (UPPER)	1
18	160-15-01400	INSULATION DISC	1

CONT'D

# RACK DRIVE ASSEMBLY PARTS Cont'd

ITEM	PART NUMBER	DESCRIPTION	QTY
19	160-36-01100	M10 STUD	6
20	A900-04-096	M10 DOME NUT	6
22	160-36-00600	RACK HANGER	1
23	A900-05-022	½" PLAIN WASHER	8
24	A900-05-059	½" SPRING WASHER	8
25	A900-04-084	M12 NUT	4
26	162-02-04300	SPACER	7
27	A900-03-436	M6 X 10LG GRUB SCREW	2
28	162-02-04500	WASHER – DRIVE SHAFT	1
29	A900-03-395	M10 X 16LG HEX. HD. SETSCREW	1
30	160-35-02000	DIRECTION OF ROTATION LABEL (NOT SHOWN)	1
31	A900-03-628	M4 X 6LG SLOTTED PAN HD SCREW	2
32	160-40-06102	PACKING SHIM – 14swg	AS REQUIRED
	160-40-06103	PACKING SHIM – 20swg	AS REQUIRED
33	A900-03-360	M6 X 12LG HEX. HD. SETSCREW	1
34	A900-05-163	M6 SHAKPROOF WASHER	2

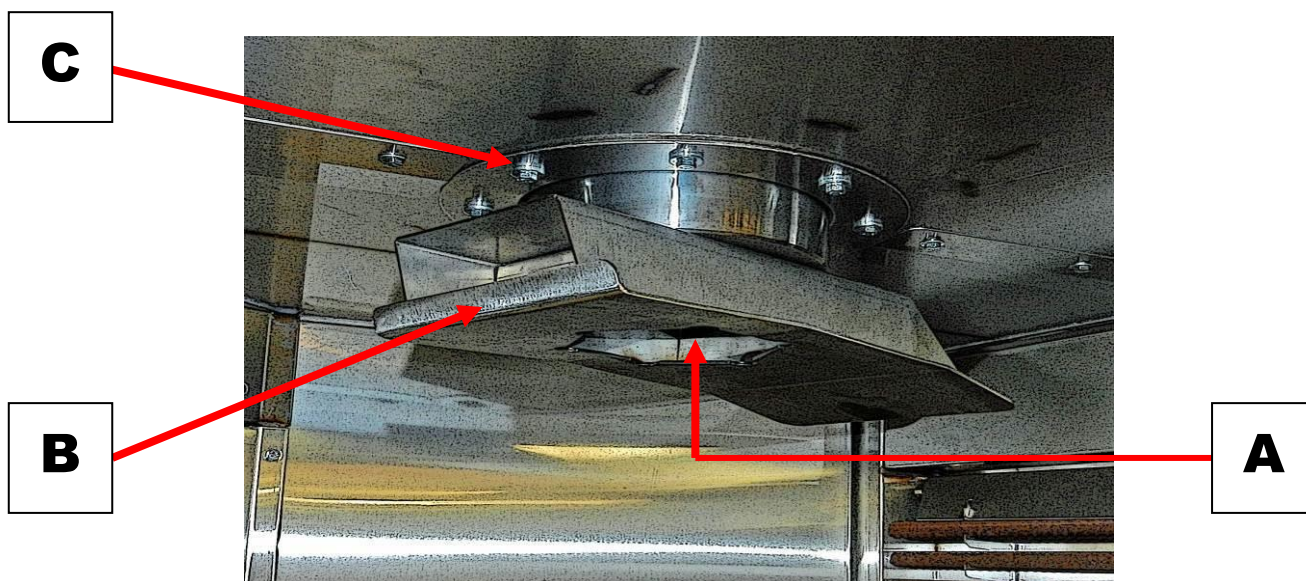
--	A900-32-016	ROPE SEAL (NOT SHOWN)	1
--	A900-12-060	RUBBER SEAL (NOT SHOWN)	1



SEE NEXT PAGE FOR FITTING INFORMATION.

## TO RENEW THE RACK DRIVE SEAL

---



This seal is situated inside the oven above the ring plate surrounding the Rack hanger shaft.

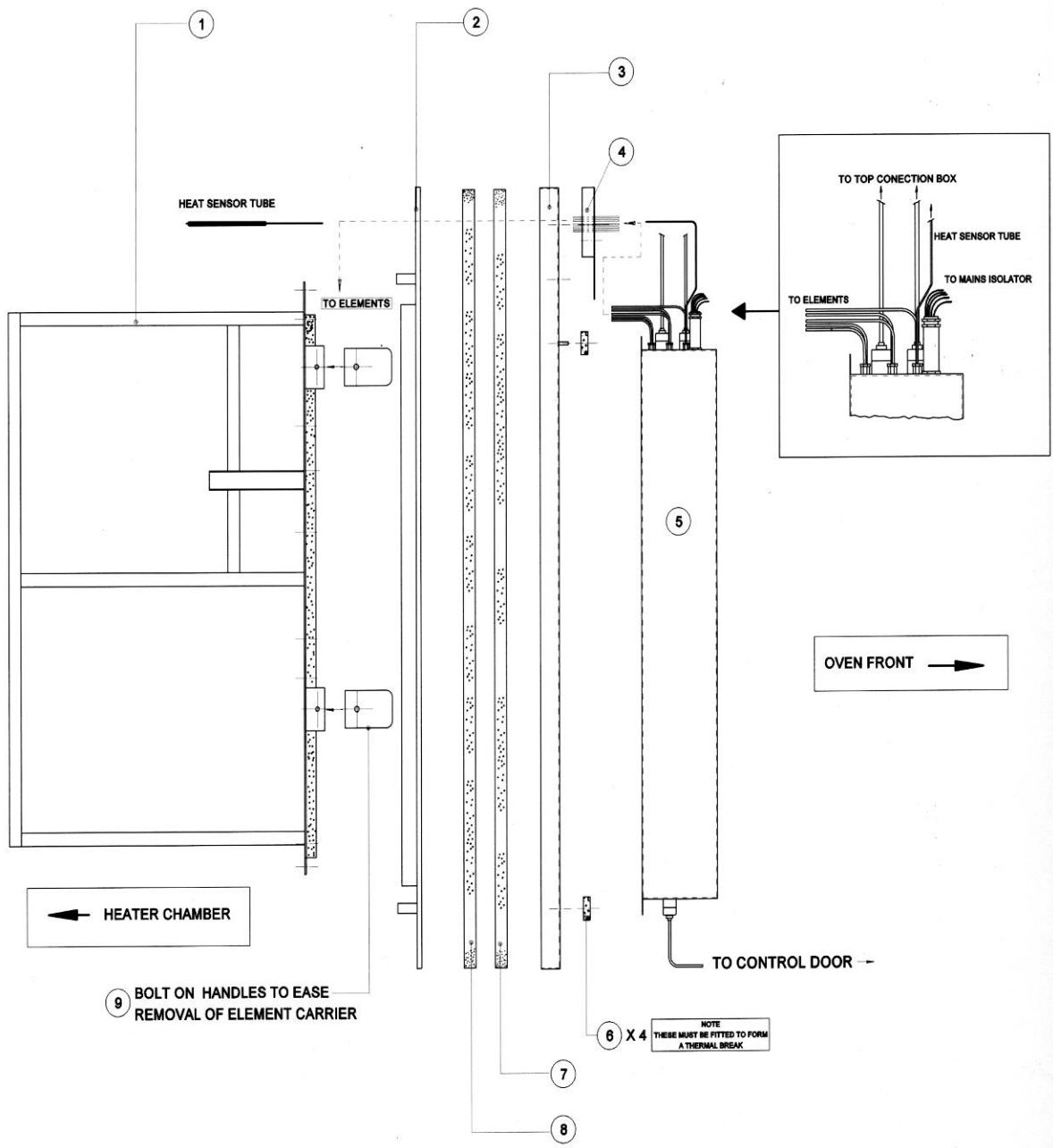
- 1 Release the six dome nuts (**A**) securing the rack hanger to its shaft and remove the hanger (**B**). Release the screws securing the ring plate and remove the plate (**C**).
- 2 Pick out the rubber ring seal and coiled rope seal from within the cavity and carefully coil in the new seal, ensuring that it is not distorted. Replace the rubber ring seal.
- 3 Refit the ring plate and the rack hanger.

### REPLACEMENT PARTS REQUIRED:

ROPE SEAL ..... PT No. **A900-32-016**

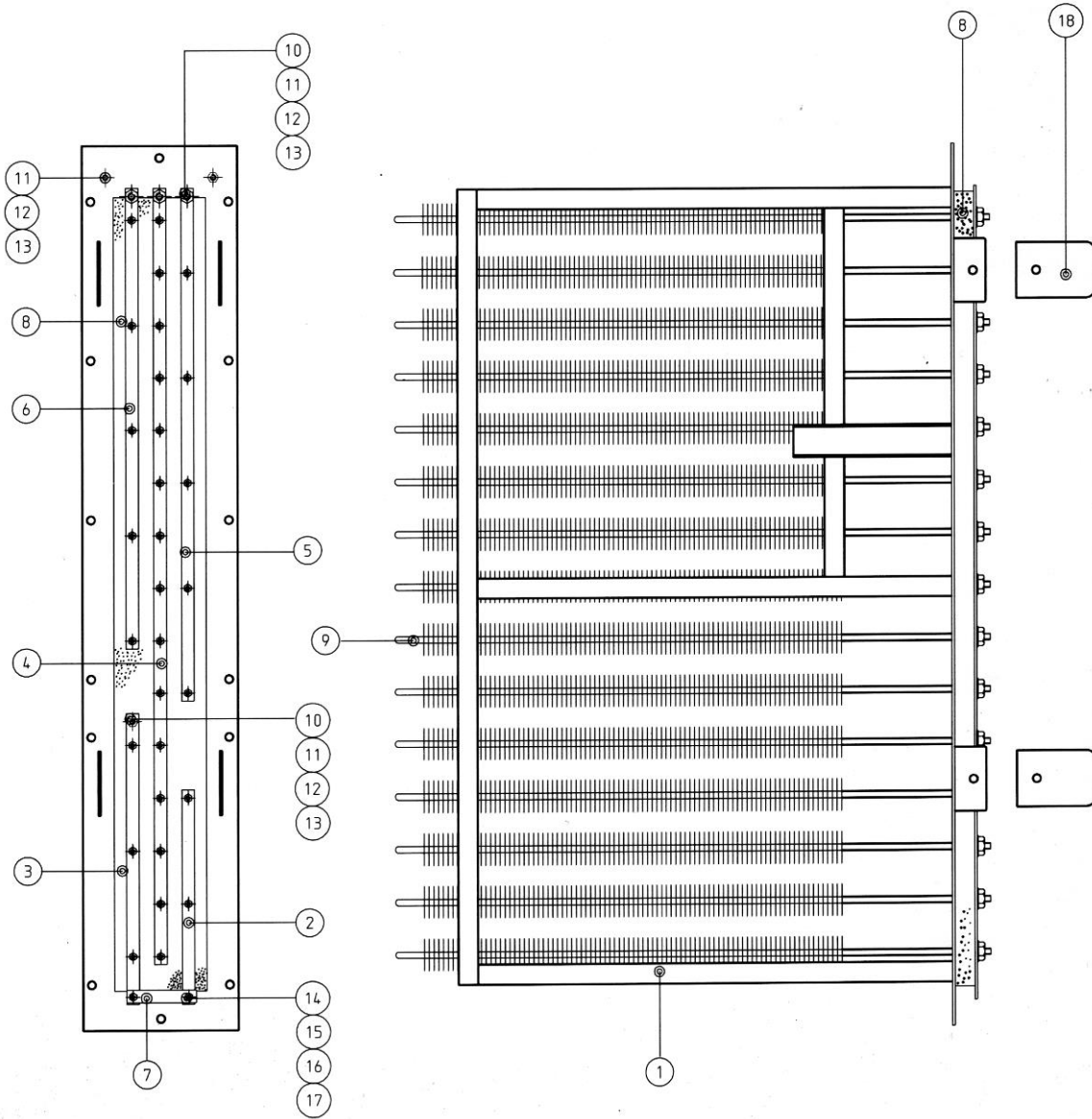
RUBBER SEAL..... PT No. **A900-12-060**

# ELEMENT BANK FITTING - MAIN COMPONENTS



ITEM	PART NUMBER	DESCRIPTION	QTY
1	164-31-01300	ELEMENT CARRIER	1
2	164-07-00800	INSULATION COVER	1
3	164-07-01200	INSULATION COVER	1
4	164-07-05000	CABLE GUIDE PLATE	1
5	164-25-00200	MAIN ELECTRIC BOX	1
6	A900-05-074	FIBRE WASHER	4
7	164-07-01100	FRONT INSULATION BOARD	1
8	164-07-01000	REAR INSULATION BOARD	1
9	164-31-02100	HANDLE	2

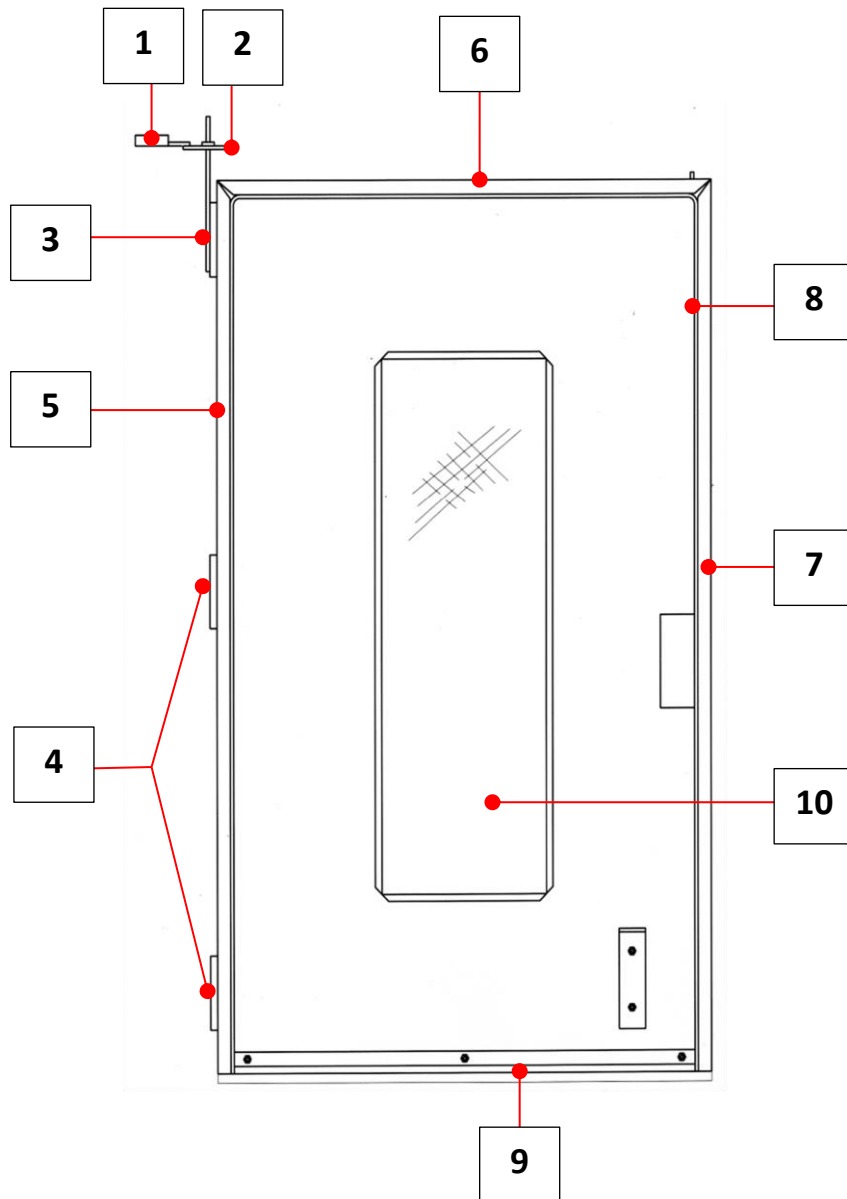
# ELEMENT CARRIER ASSEMBLY PARTS









ITEM	PART NUMBER	DESCRIPTION	QTY
1	164-31-01300	ELEMENT CARRIER WELDMENT	2
2	160-31-02600	BUSBAR	1
3	160-31-02800	BUSBAR	1
4	160-31-02700	BUSBAR	1
5	160-31-02400	BUSBAR	1
6	160-31-02500	BUSBAR	1
7	164-04-07400	BUSBAR	1
8	160-31-02900	INSULATION BOARD	1
9	B979-04-001	<b>ELEMENT</b> C/W FASTENERS	15
10	A900-03-533	M8 X 35LG HEX HD SCREW	4
11	A900-04-081	M8 FULL NUT	10
12	A900-05-164	M8 SHAKEPROOF WASHER	5
13	A900-05-012	5/16" WASHER	10
14	A900-03-361	M6 X 20LG HEX HD BOLT	2
15	A900-04-080	M6 FULL NUT	2
16	A900-05-140	M6 WASHER	2
17	A900-05-163	M6 SHAKPROOF WASHER	2
18	164-31-02100	DETACHABLE HANDLE	2





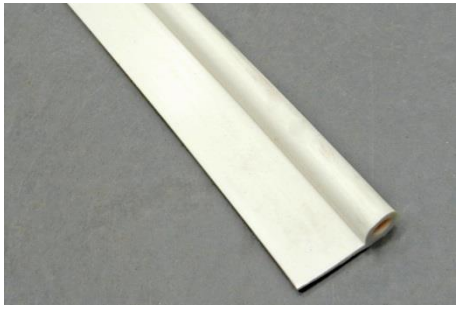
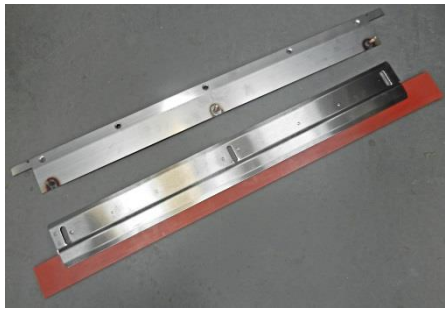

# DOOR – COMPONENTS

---

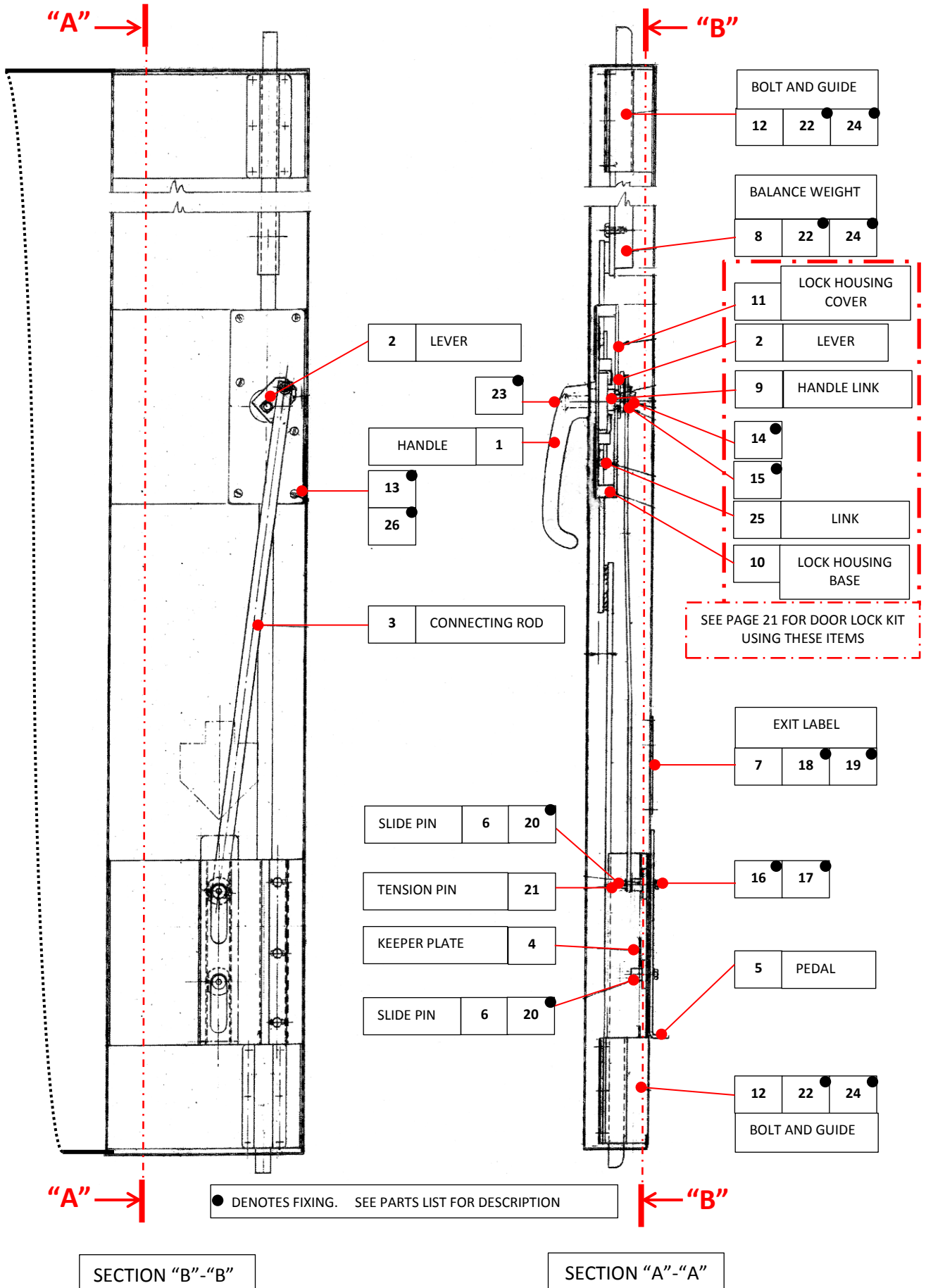




	<p><b>DOOR SWITCH</b> M164-KEB002</p>	<p><b>1</b></p>
	<p><b>SWITCH CAM</b> 160-06-02200</p>	<p><b>2</b></p>
	<p><b>TOP HINGE – RH DOOR</b> 160-06-06700</p>	<p><b>3</b></p>
<p><b>TOP HINGE – LH DOOR</b> 160-06-06701</p>		
	<p><b>MIDDLE HINGE</b> A900-27-051</p>	<p><b>4</b></p>
<p><b>BOTTOM HINGE</b> A900-27-051</p>		
	<p><b>INNER SEAL CLAMP</b> <small>(HINGE SIDE)</small> 160-06-07101</p>	<p><b>5</b></p>
	<p><b>OUTER SEAL CLAMP</b> <small>(HINGE SIDE)</small> 160-06-07001</p>	

	<p><b>INNER SEAL CLAMP</b> (TOP) 160-06-07300</p>	<p><b>6</b></p>
	<p><b>OUTER SEAL CLAMP</b> (TOP) 160-06-07200</p>	
	<p><b>INNER SEAL CLAMP</b> (HANDLE SIDE) 160-06-07100</p>	<p><b>7</b></p>
	<p><b>OUTER SEAL CLAMP</b> (HANDLE SIDE) 160-06-07000</p>	
	<p><b>“P” SEAL</b> 160-00-00100</p>	<p><b>8</b></p>
	<p><b>BOTTOM SEAL ASSEMBLY</b> 160-48-06500</p> <p><b>RUBBER BOTTOM SEAL ONLY</b> 160-48-06300</p>	<p><b>9</b></p>
	<p><b>DOUBLE GLAZED UNIT</b> 160-06-05900</p> <p>SUPPLY WITH 3500mm OF “U” SEAL A900-12-051</p>	<p><b>10</b></p>

# DOOR – LOCK COMPONENTS



## DOOR – LOCK COMPONENTS Cont'd

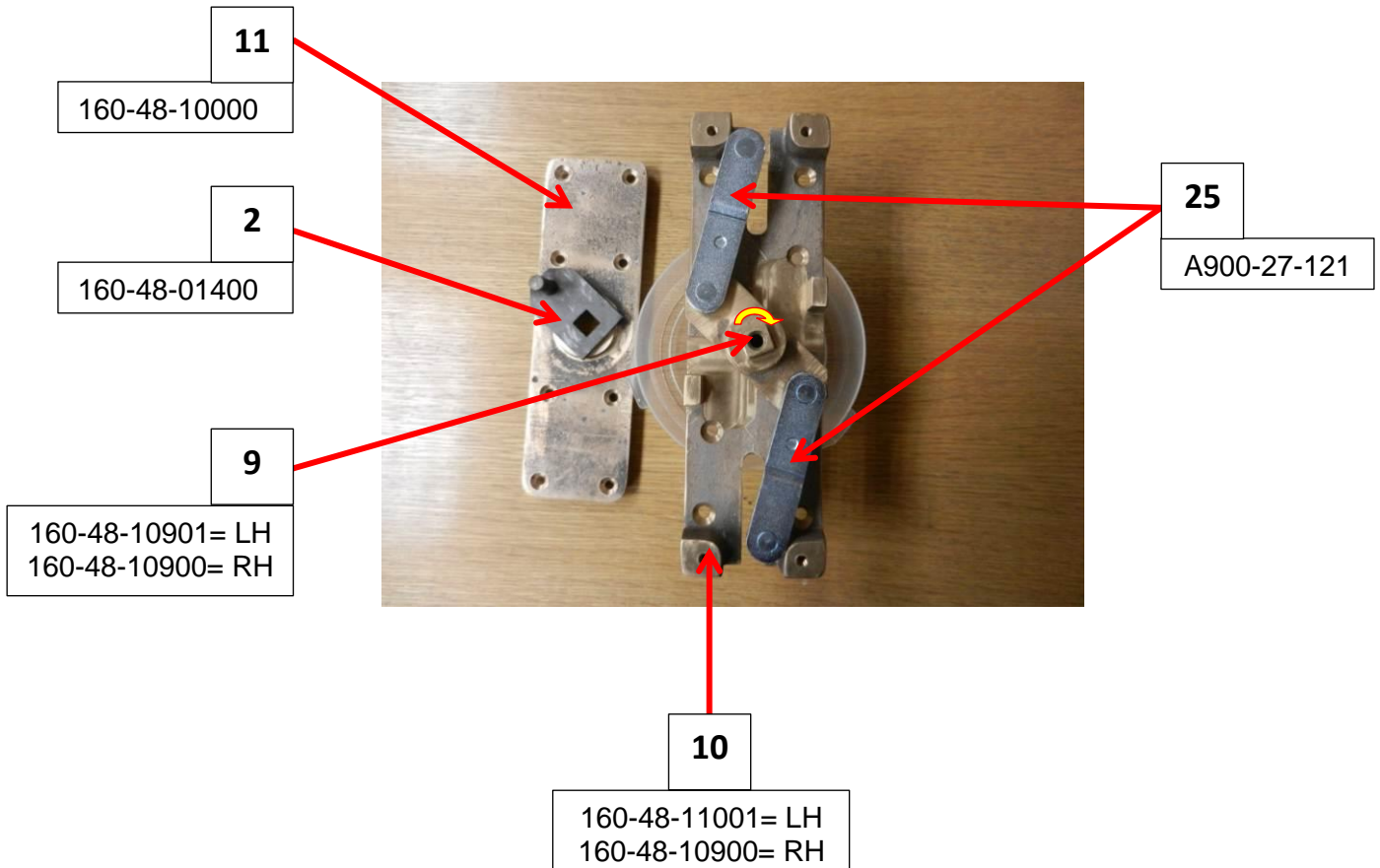
ITEM	PART NUMBER	DESCRIPTION	QTY
1	160-32-02000	HANDLE	1
2 *	160-48-01400	LEVER	1
3	160-48-01600	CONNECTING ROD	1
4	160-48-01700	KEEPER PLATE	1
5	160-48-01800	PEDAL	1
6	160-48-01900	SLIDE PIN	2
7	160-48-02000	EXIT LABEL	1
8	160-48-02100	BALANCE WEIGHT	1
9 *	160-48-10900	HANDLE LINK	1
10 *	160-48-11000	LOCK HOUSING BASE	1
11 *	160-48-10000	LOCK HOUSING COVER	1
12	A900-27-072	BOLT AND GUIDE	2
13	A900-03-714	M6 X 16LG CSK/SKT HD ST ST SCREW	6
14	A900-03-374	M8 X 12LG HEX HD ST ST SCREW	1
15	A900-05-141	M8 SPRING WASHER	1
16	A900-03-532	M8 X 20LG HEX HD SCREW	2
17	A900-05-164	M8 LOCK WASHER	2
18	A900-03-372	M4 X 12LG HEX HD SCREW	4
19	A900-05-162	M4 LOCK WASHER	4
20	A900-05-143	M10 PLAIN WASHER	4
21	A900-01-120	3MM DIA. TENSION PIN X 15MMLG	3
22	A900-03-360	M6 X 12LG HEX HD SCREW	22
23	SUPPLIED WITH HANDLE	M8 X 40LG CSK/HD/PLATED SCREW	1
24	A900-05-163	M6 SHAKEPROOF WASHER	20
25 *	A900-27-121	LINK	2
26	A900-02-897	M6 X 12LG CSK/SKT HD ST ST SCREW	8

\*See next page for views of replacement lock kit containing these items.

# MX OVEN - REPLACEMENT DOOR LOCK KIT

LH DOOR LOCK KIT **M160-KSX005**

RH DOOR LOCK KIT **M160-KSX004**



## **NOTE**

This can also be used to replace the older Sampson aluminium lock housing found on very early mx ovens.